



***Translating Global Framework into Local  
Actions: Achieving the Millennium  
Development Goals through Inter-  
Community Partnerships***

***Experience of Indonesia***

Diah S. Saminarsih  
Assistant Special Envoy of the President of  
the Republic of Indonesia on MDGs





# Eight goals of the MDGs: Improve social and economic quality of poor people

Each goal has:

A number of time-bound and measurable targets  
and indicators to be achieved by 2015.

2015



# ***Focuses of MDGs***

## **Human Development**

- **Nutrition**
- **Health services**
- **Education**

## **Infrastructure**

- ***Access to safe drinking water & sanitation***
- ***Energy, ICT, sustainable agriculture, transportation infrastructure, and the environment***

## **Social, economic and political rights**

- **Empowering women, eliminating violence**
- **Improving political capacity, equal access to public services**

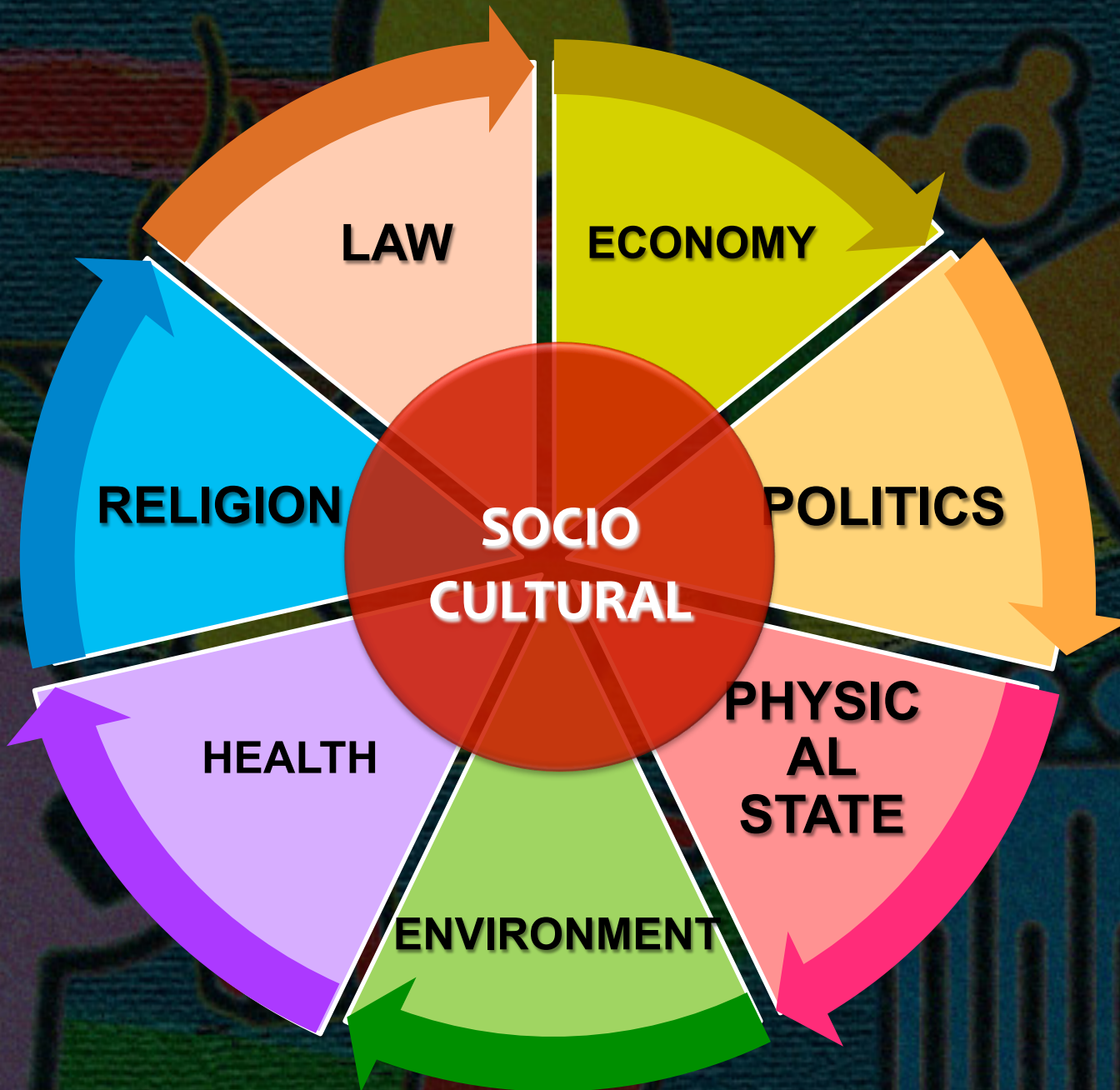


# **MDGs:** *an effort to improve HDI*

HDI is based on empirical data obtained from UNDP statistics of 2011, comprising 187 countries

*Rankings show variations among countries in the world, disparity among developed countries, developing countries, and least develop countries*

*Are there other factors at play?*





# MDG Goal 1

## Eradicate extreme poverty and hunger

- Target 1A:

*Halve, between 1990 and 2015, the proportion of people whose income is less than \$1 a day*

Target 1B:

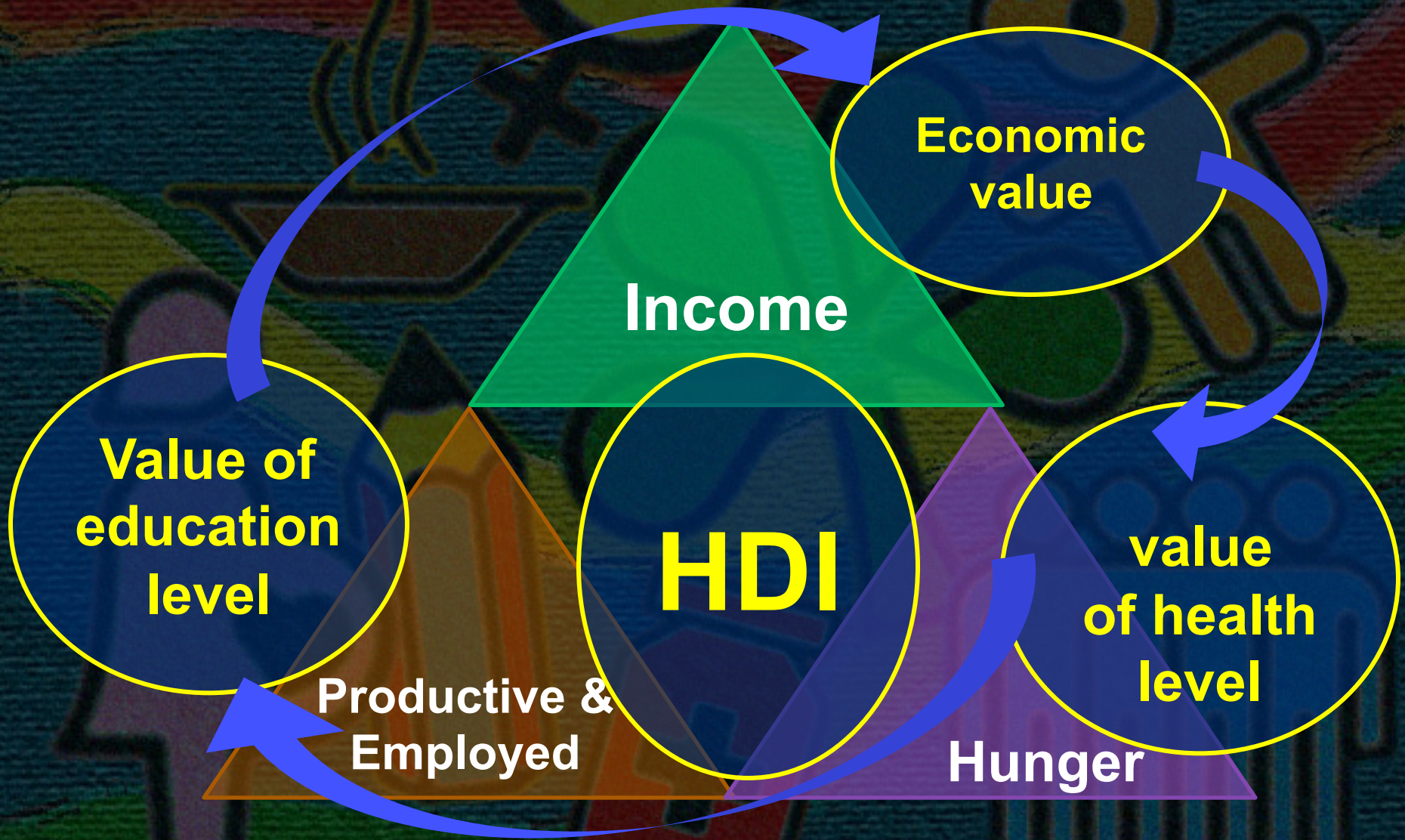
Achieve full and productive employment and decent work for all, including women and young people

Target 1C:

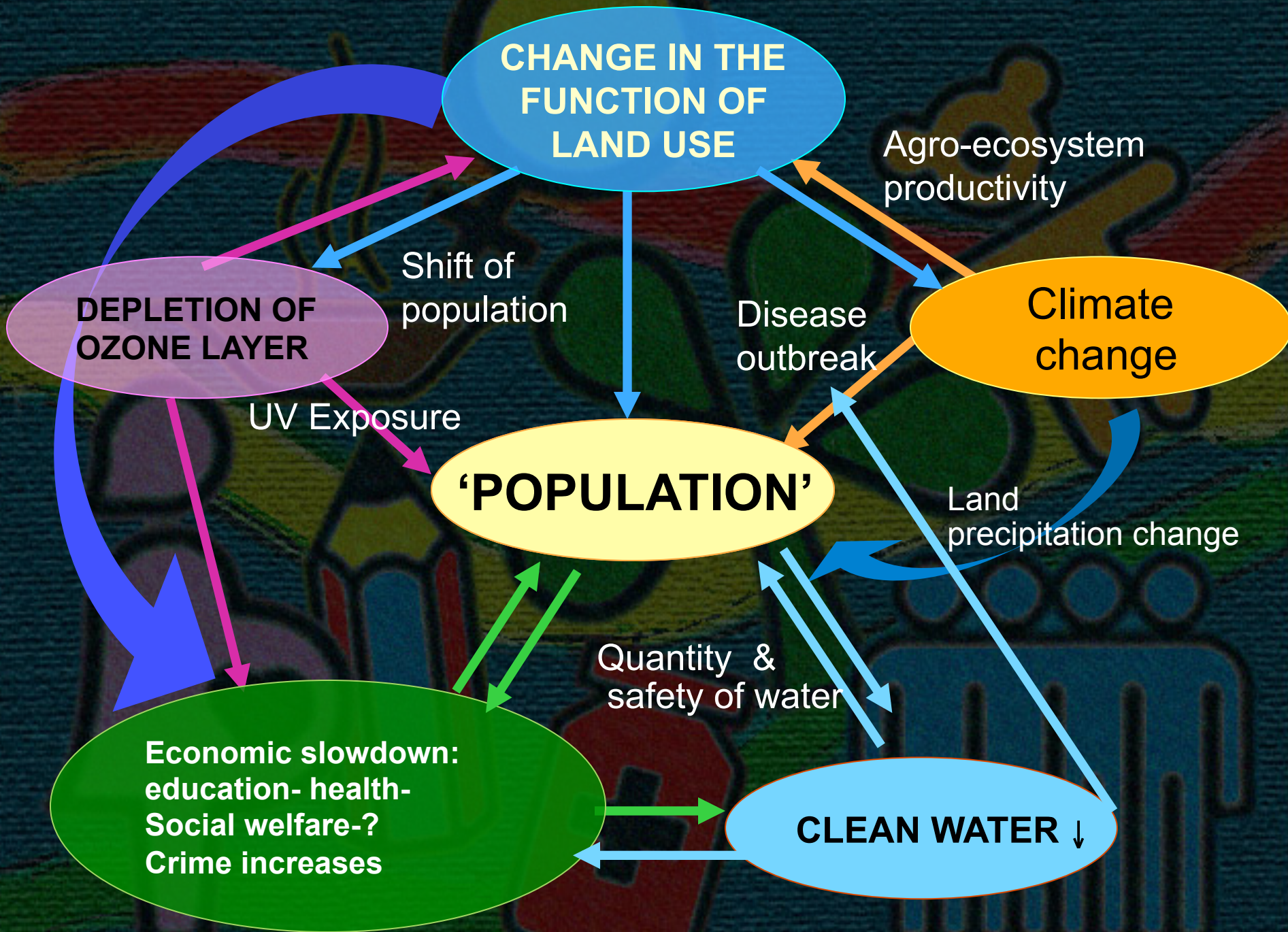
*Halve, between 1990 and 2015, the proportion of people who suffer from hunger.*



# MDG Goal 1



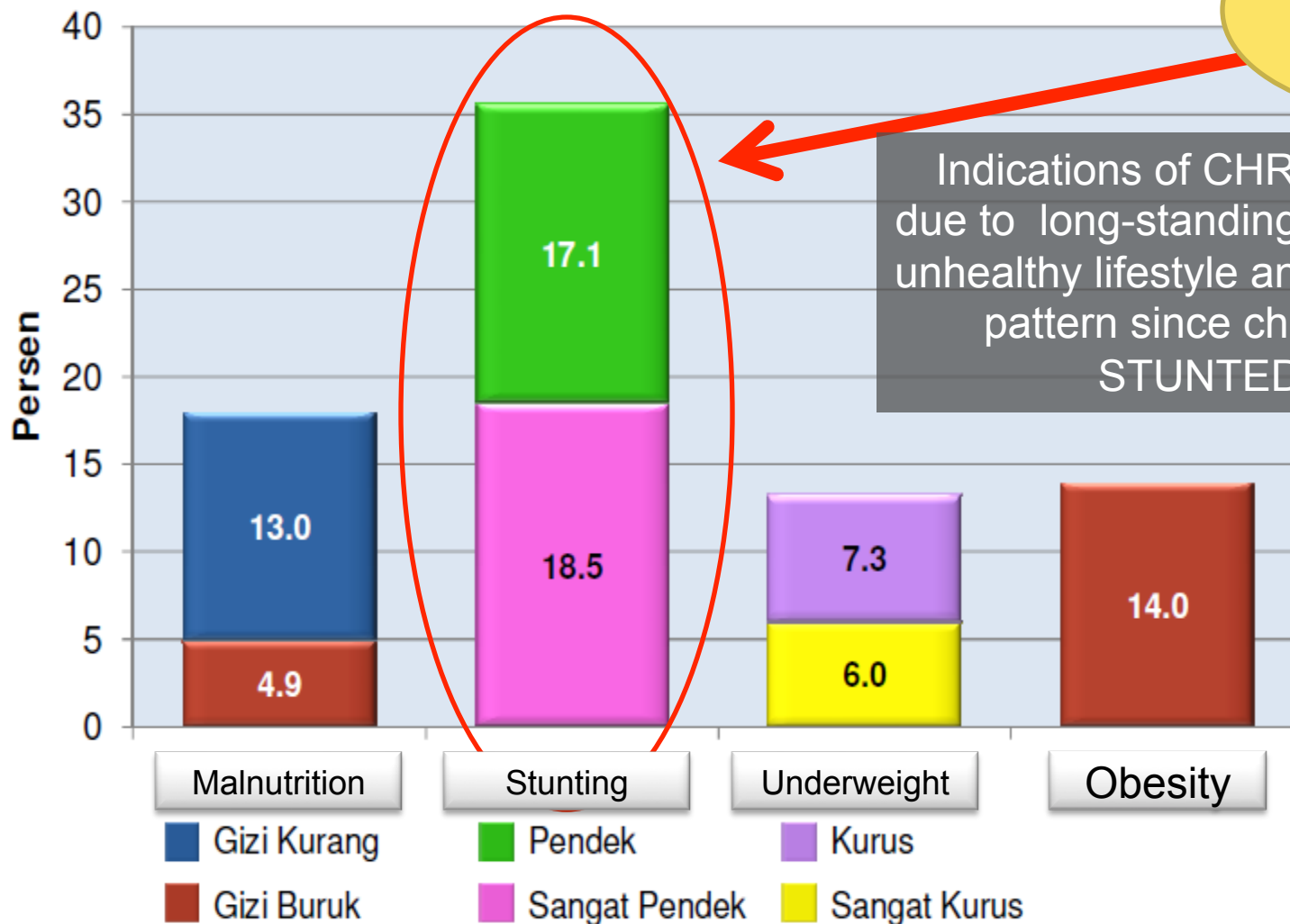






# Prevalence of Nutritional Problems in Under-Five Children

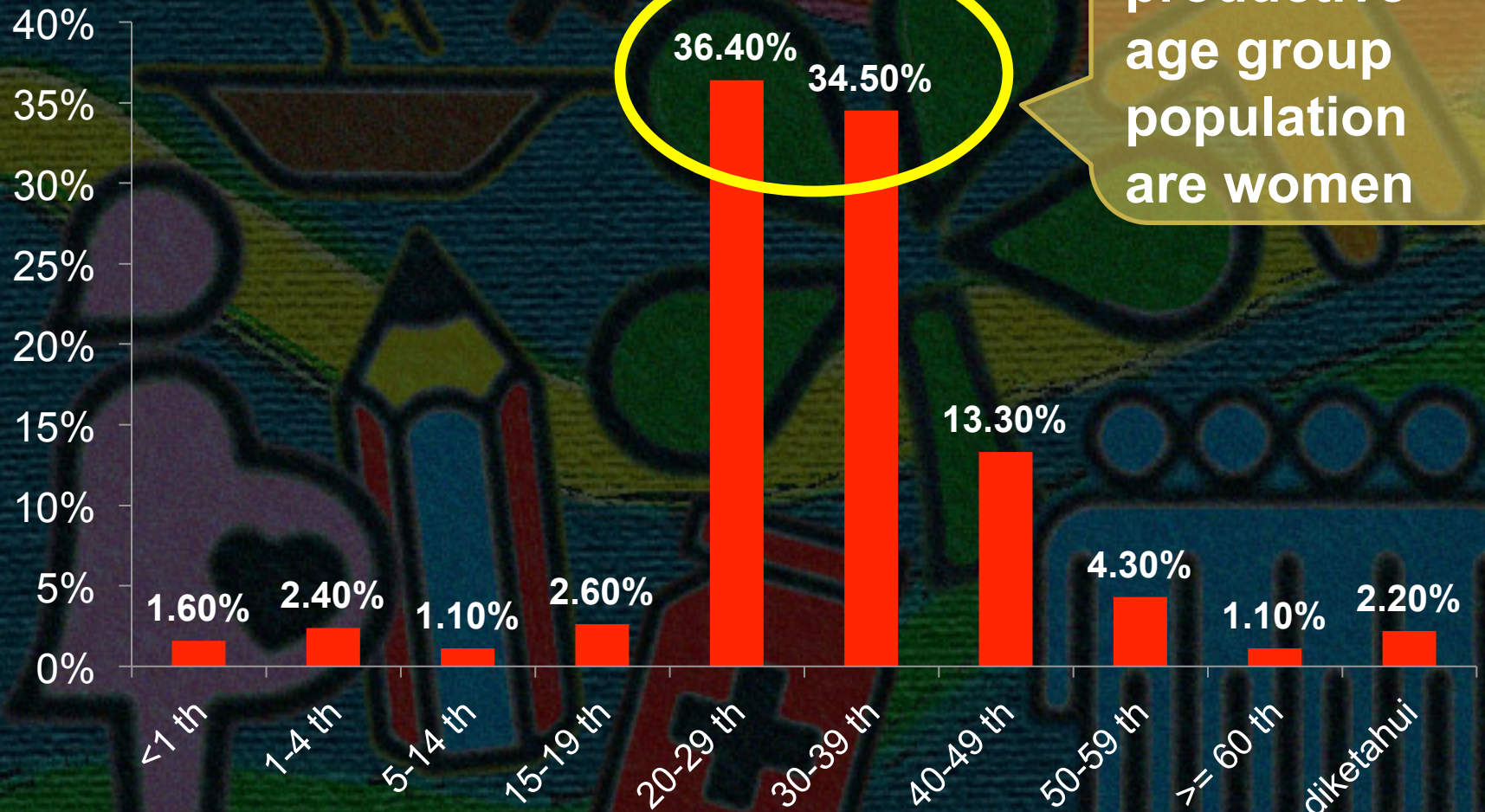
35.6%



Indications of CHRONIC malnutrition due to long-standing conditions: poverty, unhealthy lifestyle and bad diet/parenting pattern since childbirth result in STUNTED children.



# Percentage of AIDS Prevalence in Indonesia based on Age Group - Q2 2011





# ***Maternal Deaths***

**Cause outside  
of  
Health-**

***Across Sectors  
Infrastructure***

***Unmet need  
Family  
Planning***

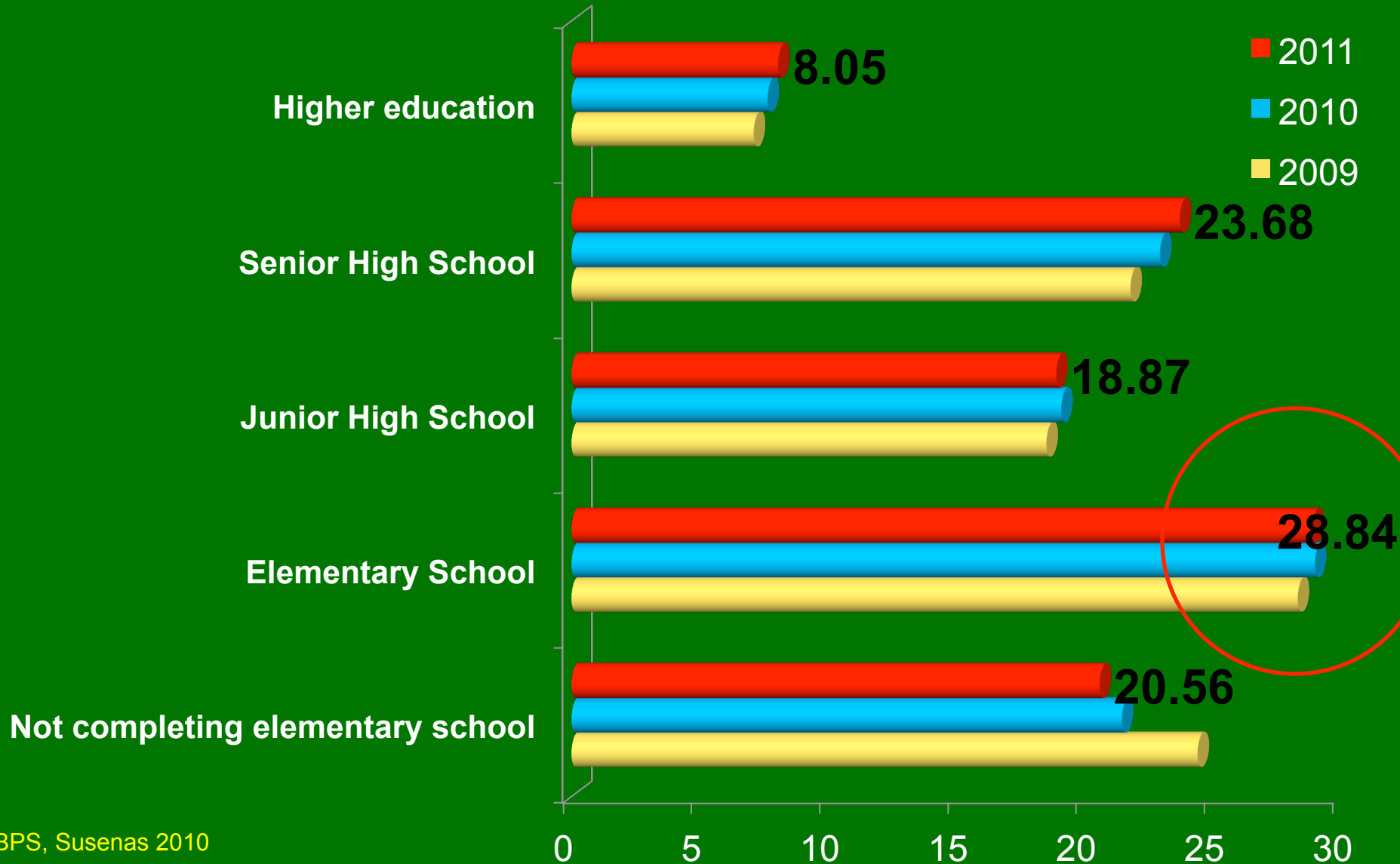
***Unsafe  
Abortion***

**Childbirth not  
assisted by skilled  
birth attendants**

**Indirect Cause  
of anemia:  
worm infection  
and  
under nutrition**

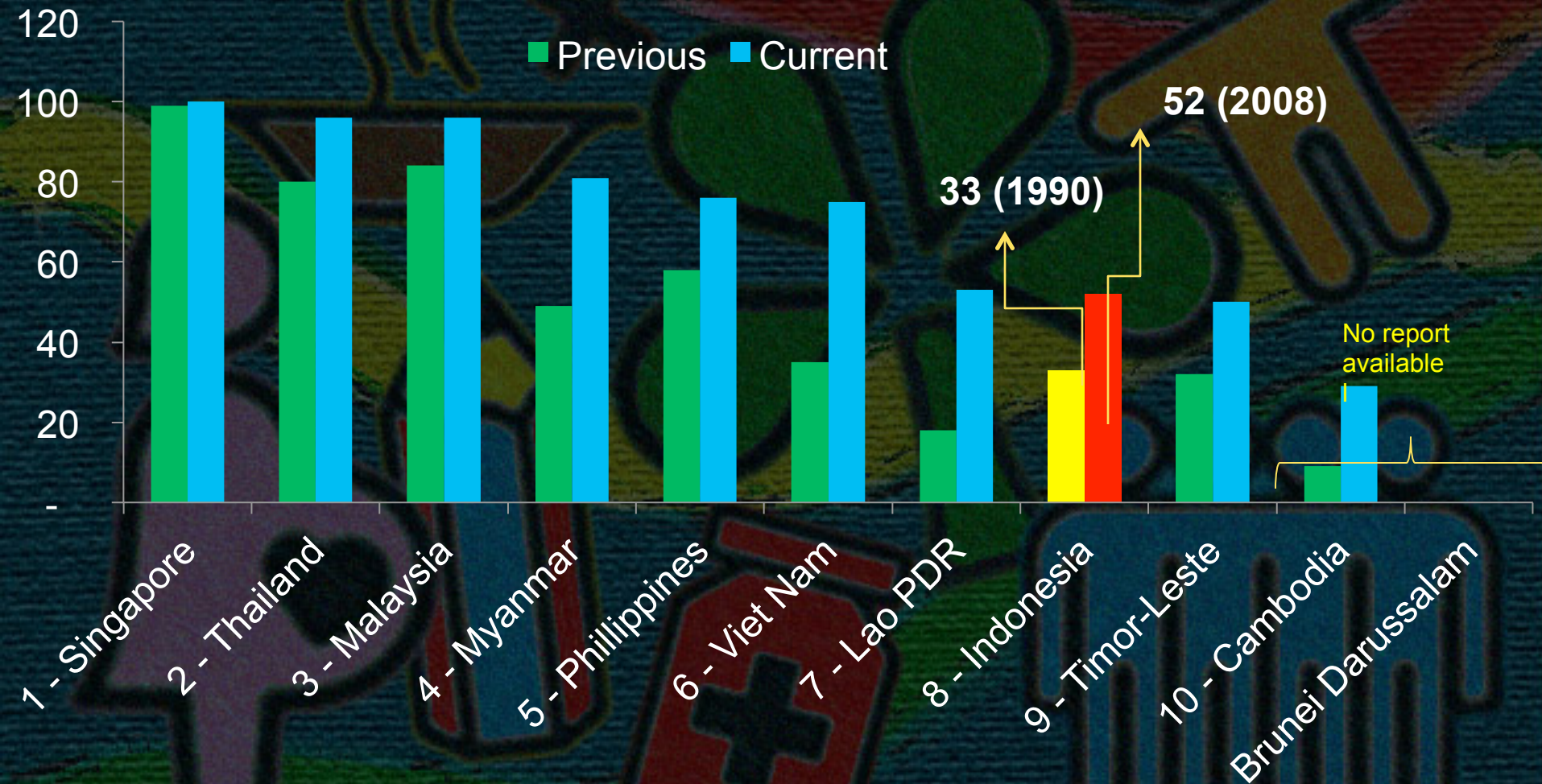


# Percentages of Population Who Work According to Highest Level of Education Graduated, 2009-2011



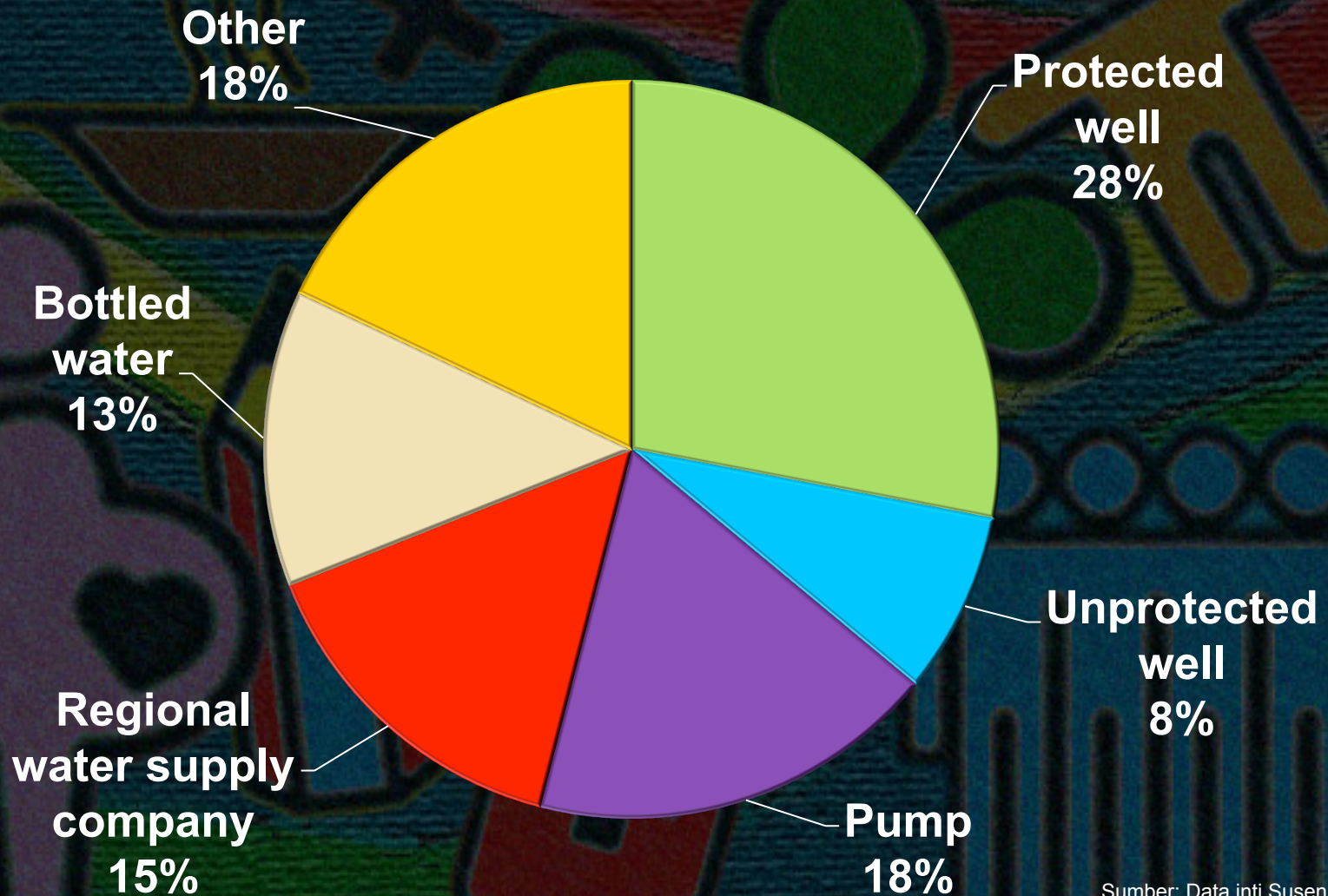


# MDG-7 : Percentages of basic sanitation facilities among South-east Asian countries



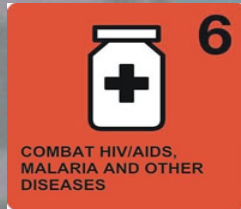
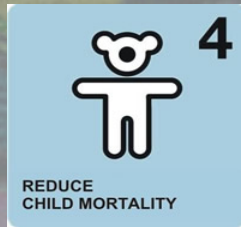
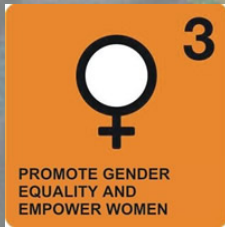


# Percentages of Main Sources of National Clean Water





# INTEGRATED PROGRAMS



# SUSTAINABLE IMPACT OF ECONOMIC DEVELOPMENT

**‘Cost of Value’**  
**‘Intangible Cost’**



In October 2011, the 7 billionth member of the human family was born





# Sustainability

Food

Water

Environment

INDONESIAN  
HUMAN  
DEVELOPMENT

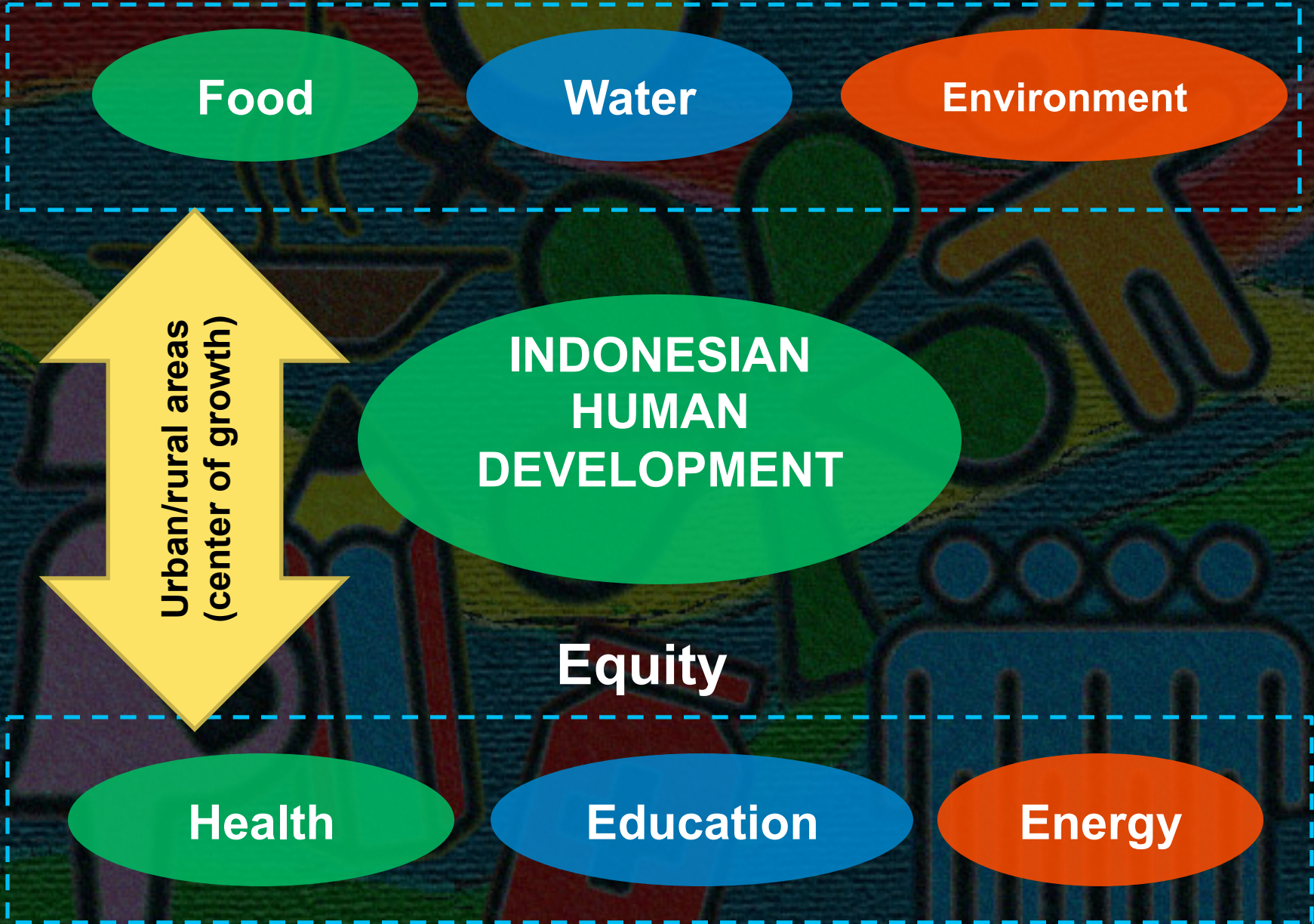
Urban/rural areas  
(center of growth)

Equity

Health

Education

Energy





# POST 2015

End poverty



Empower girls and women and achieve gender equality



Provide quality education and lifelong learning



Ensure healthy lives



Ensure food security and good nutrition



Achieve universal access to water and sanitation



Secure sustainable energy



Create jobs, sustainable livelihoods, and equitable growth



Manage natural resource assets sustainably



Ensure good governance and effective institutions



Ensure stable and peaceful societies



Create a global enabling environment and catalyze long-term finance





# Health & Education



# Energy



# Governance



# Environment



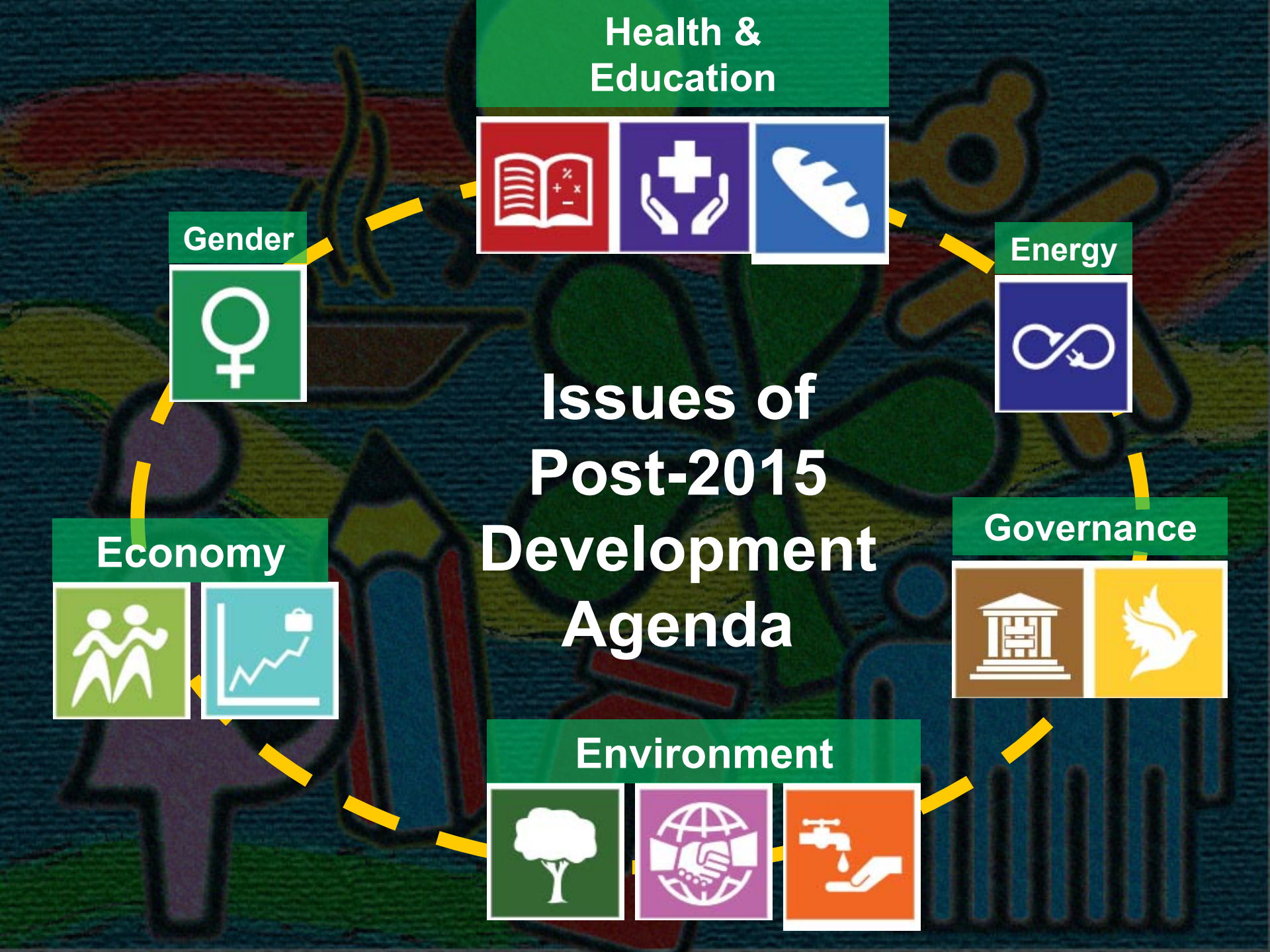
# Economy



# Gender

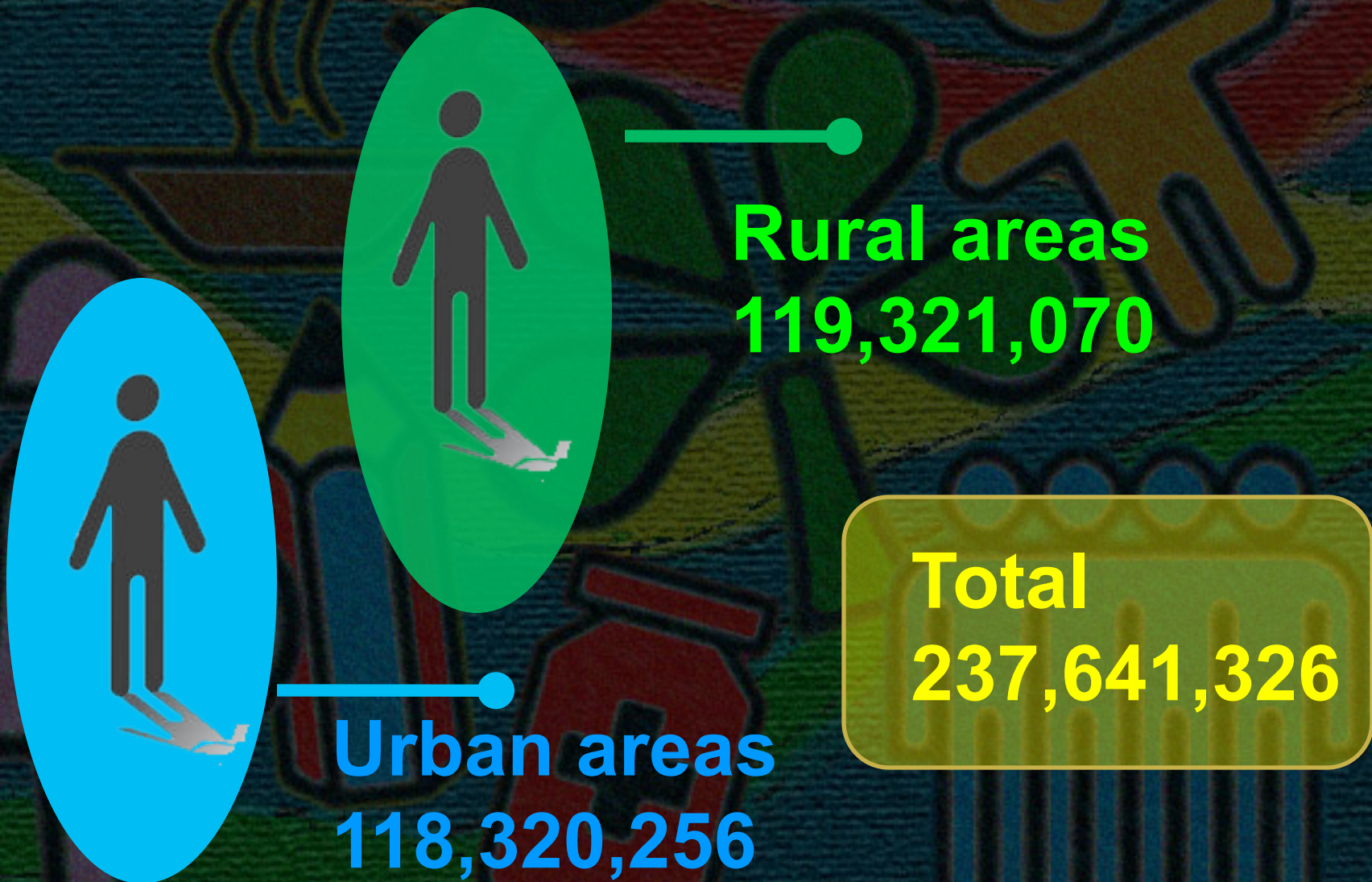


# Issues of Post-2015 Development Agenda





# Indonesian people by 2010



**Rural areas**  
**119,321,070**

**Urban areas**  
**118,320,256**

**Total**  
**237,641,326**



# Population

Districts 399  
Municipalities 98  
Sub-districts 6.994  
Villages 8.309

**Sub-villages 72,944**

Area size 1,913,578,68



**Java 57.5%**

**Area size 6.8%**

**Outside of Java 42.5%**

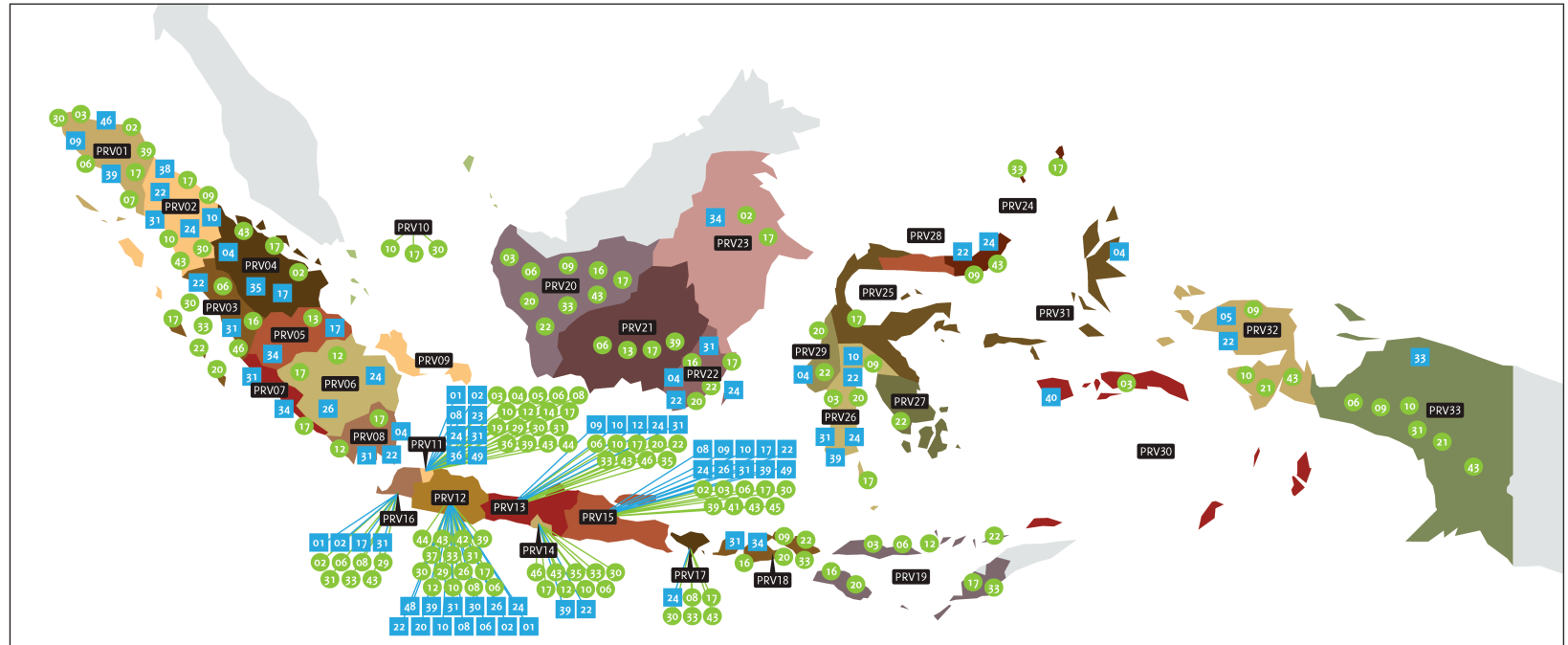
**Area Size 93,2%**



# Mapping of Private Sector and Civil Society Organizations



## Pemetaan Millenium Development Goals



### ● PROVINSI

- PRV01 - Aceh
- PRV02 - Sumatra Utara
- PRV03 - Sumatra Barat
- PRV04 - Riau
- PRV05 - Jambi
- PRV06 - Sumatra Selatan
- PRV07 - Bengkulu
- PRV08 - Lampung
- PRV09 - Kep. Bangka Belitung
- PRV10 - Kep. Riau
- PRV11 - D.K.I. Jakarta
- PRV12 - Jawa Barat
- PRV13 - Jawa Tengah
- PRV14 - D.I. Yogyakarta
- PRV15 - Jawa Timur
- PRV16 - Banten
- PRV17 - Bali
- PRV18 - Nusa Tenggara Barat
- PRV19 - Nusa Tenggara Timur
- PRV20 - Kalimantan Barat
- PRV21 - Kalimantan Tengah
- PRV22 - Kalimantan Selatan
- PRV23 - Kalimantan Timur
- PRV24 - Sulawesi Utara
- PRV25 - Sulawesi Tengah
- PRV26 - Sulawesi Selatan
- PRV27 - Sulawesi Tenggara
- PRV28 - Gorontalo
- PRV29 - Sulawesi Barat
- PRV30 - Maluku
- PRV31 - Maluku Utara
- PRV32 - Papua Barat
- PRV33 - Papua

### ● ORGANISASI MASYARAKAT MADANI

- CS0001 - Mercy Corps
- CS0002 - JHPIEGO/MCHIP
- CS0003 - World Vision Indonesia
- CS0004 - Aisyiyah
- CS0005 - Selamatkan Ibu
- CS0006 - Sentra Laktasi Indonesia
- CS0007 - Asosiasi Toilet Indonesia
- CS0008 - KKI
- CS0009 - Cambodia Trust
- CS0010 - Family Health International
- CS0011 - CCP - 1 Foundation
- CS0012 - ChildFund Indonesia
- CS0013 - IAFCP
- CS0014 - Universitas Paramadina
- CS0015 - SEAMEO-TROPMED RCN - UI
- CS0016 - Partnership for Governance Reform
- CS0017 - PKBI
- CS0018 - Muhammadiyah
- CS0019 - Green Building Council
- CS0020 - Jari Indonesia
- CS0021 - Yayasan Pembangunan Citra insan Indonesia
- CS0022 - Association for Community Empowerment (ACE)
- CS0023 - NDI
- CS0024 - Project HOPE
- CS0025 - Assic Creative Management
- CS0026 - CCPHI
- CS0027 - Dewain Riset Nasional
- CS0028 - GPDLI
- CS0029 - Humanity Indonesia
- CS0030 - KOPWANI
- CS0031 - Lion Club Jakarta
- CS0032 - Partnership for Government / Kemitraan
- CS0033 - Pop Indonesia
- CS0034 - Sword of Vision
- CS0035 - YKAI
- CS0036 - Yayasan Kusuma Buana
- CS0037 - Yayasan Pondok Kasih
- CS0038 - Yayasan Usaha Mulia
- CS0039 - Yayasan Wira Rakema
- CS0040 - Yayasan Alertasia
- CS0041 - Dewahist
- CS0042 - Hope Worldwide Indonesia
- CS0043 - Yayasan Jurnal Perempuan
- CS0044 - LSM Faradi
- CS0045 - UPC Roda Kemanusiaan
- CS0046 - Teknik Fisika, FT UGM
- CS0047 - Fakultas Ekonomi Universitas Padjajaran
- CS0048 - Lembaga Demografi - FEUI
- CS0049 - IAKMI
- CS0050 - Perkumpulan Prakarasa
- CS0051 - JHLUCP
- CS0052 - DWFP
- CS0053 - IMPACT Bandung
- CS0054 - YKB -PTD
- CS0055 - Yayasan Pullih
- CS0056 - Organisasi Massa Persaudaraan

### ■ SEKTOR SWASTA

- PSC001 - Pfizer Indonesia
- PSC002 - Tiga Raksa Satria
- PSC003 - Trakindo Utama
- PSC004 - Indika Energy
- PSC005 - BP Indonesia
- PSC006 - IPMG
- PSC007 - Sierad Produce
- PSC008 - Frisian Flag Indonesia
- PSC009 - Exxon Mobil Indonesia
- PSC010 - Johnson & Johnson Indonesia
- PSC011 - KMK Global Sports
- PSC012 - Danone - Aqua
- PSC013 - GE (General Electric)
- PSC014 - Aneka Tambang
- PSC015 - Ajinomoto
- PSC016 - Asia Pulp & Paper
- PSC017 - Indofood Sukses Makmur
- PSC018 - Monica Hijau Lestari (Body Shop)
- PSC019 - AIA Financial Sector
- PSC020 - Kaltim Prima Coal
- PSC021 - Telekomunikasi Selular
- PSC022 - Unilever Indonesia
- PSC023 - Bank Mandiri
- PSC024 - Arutmin Indonesia Tambang Batulicin
- PSC025 - Bank Negara Indonesia
- PSC026 - Berau Coal
- PSC027 - Medco E&P Indonesia
- PSC028 - Indocement Tunggul Prakarsa
- PSC029 - Astra Internasional
- PSC030 - Indosat
- PSC031 - XL Axiata
- PSC032 - Freoport Indonesia
- PSC033 - Pertamina
- PSC034 - Sinar Mas Forestry
- PSC035 - KBN
- PSC036 - Unilever Indonesia
- PSC037 - Toba Pulp Lestari
- PSC038 - Koperasi Mitra Dhuafa
- PSC039 - Weda Bay Nickel
- PSC040 - Pulau Mas
- PSC041 - Coca Cola
- PSC042 - Toyota Indonesia
- PSC043 - Semen Gresik
- PSC044 - Martina Berto
- PSC045 - Medika Pratama
- PSC046 - Nestle Indonesia
- PSC047 - Perusahaan Pengelola Aset
- PSC048 - Express Group
- PSC049 - Palton Energy
- PSC050 - Lafarge Cement Indonesia
- PSC051 - Adaro Indonesia





# INDONESIA MDG AWARDS 2013

[awards.indonesiamdgs.org](http://awards.indonesiamdgs.org)

Twitter :@MDGAwards

Facebook : Indonesia MDG Awards



**Peta Sebaran Program Indonesia MDGs Awards 2013**



**Keterangan Gambar :**

	HIV/AIDS	KIA	Air Bersih & Sanitasi	Pendidikan	Nutrisi
Pemda/Pemkot	▲	▲	▲	▲	▲
Swasta	+	+	+	+	+
Pemuda/Akademisi	♥	♥	♥	♥	♥
Organisasi Masyarakat	●	●	●	●	●

443 Applications – Online and Offline  
 64 Nominees  
 40 Finalists  
 20 Winners





# Pencerah Nusantara

[www.pencerahnusantara.org](http://www.pencerahnusantara.org)

Twitter : @pencerahnusa

Facebook : Pencerah Nusantara

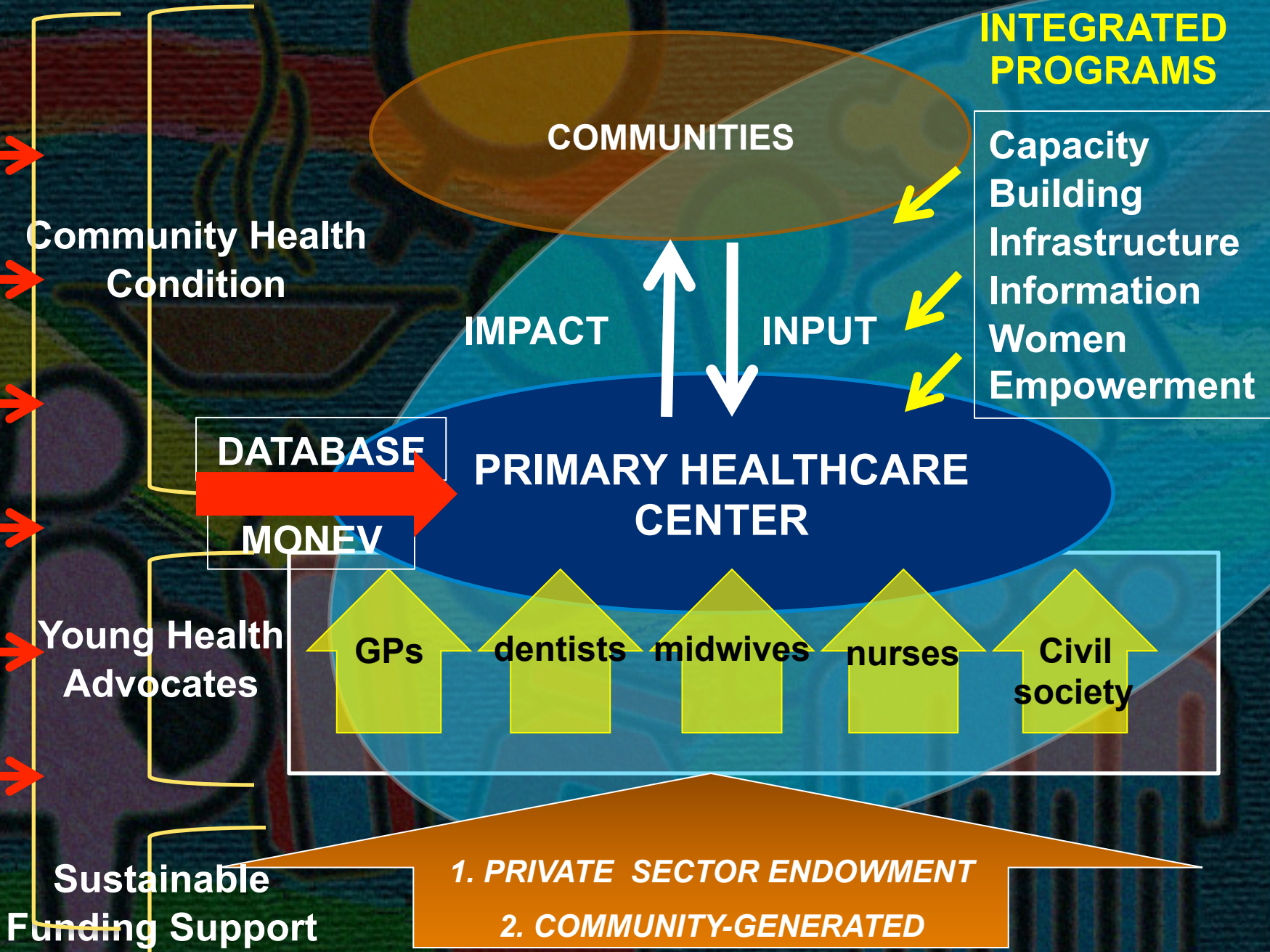


# Indonesia Health Services

RS Vertikal  
Jamkesmas  
Kesehatan Tertier  
Masyarakat Miskin  
Layanan Kesehatan Sekunder  
Tanpa Kartu  
Sehat Jakarta  
Askes  
Jampersal  
Desa Siaga  
Rural Swasta  
Puskesmas  
Kartu



# ADVOCACY - EDUCATION





# A sustainable model of partnership: “Pencerah Nusantara”

- Office of President ‘s Special Envoy on MDGs:
  - *across sector partnership among stakeholders is crucial in achieving the MDG targets*
  - *underlines realignment, collaboration, synergy and harmonization*
  - *coupled with use of IT to disseminate information and to monitor*
  - *brings together private sector, civil society, and government institutions in a collective effort to bring about changes at the grassroots level in several locations in Indonesia.*



# What is “Pencerah Nusantara”?

1 Team of young professionals: GPs, dentists, midwives, nurses, health enthusiasts

Integrated Primary Care



Focus: Health, education, community empowerment

Community Welfare

- A strong inter-sectoral & holistic approach which relies on the interconnectedness of different factors underlying community welfare.
- *A form of today's patriotism of young people to serve the nation.*



# PENCERAH NUSANTARA *PROCESS OF IMPLEMENTATION*

## DESIGN and PLANNING

### Recruitment and Selection

- Online Application
- Automatic Scoring
- Manual Scoring
- Medical Competency (GPs)
- Behavioral Assessment

### Implementation in Communities

- Health Promotion
- Capacity Building/Education
- Raise awareness on role of primary health care
- Build inter professional and multi sector collaboration

### Health Workers Capacity Building

- Medical (ObGyn, Community Medicine, Pediatrics, Emergency and Trauma)
- Program Management
- Leadership
- Media & Communication
- Gender Harmony
- Peer Education

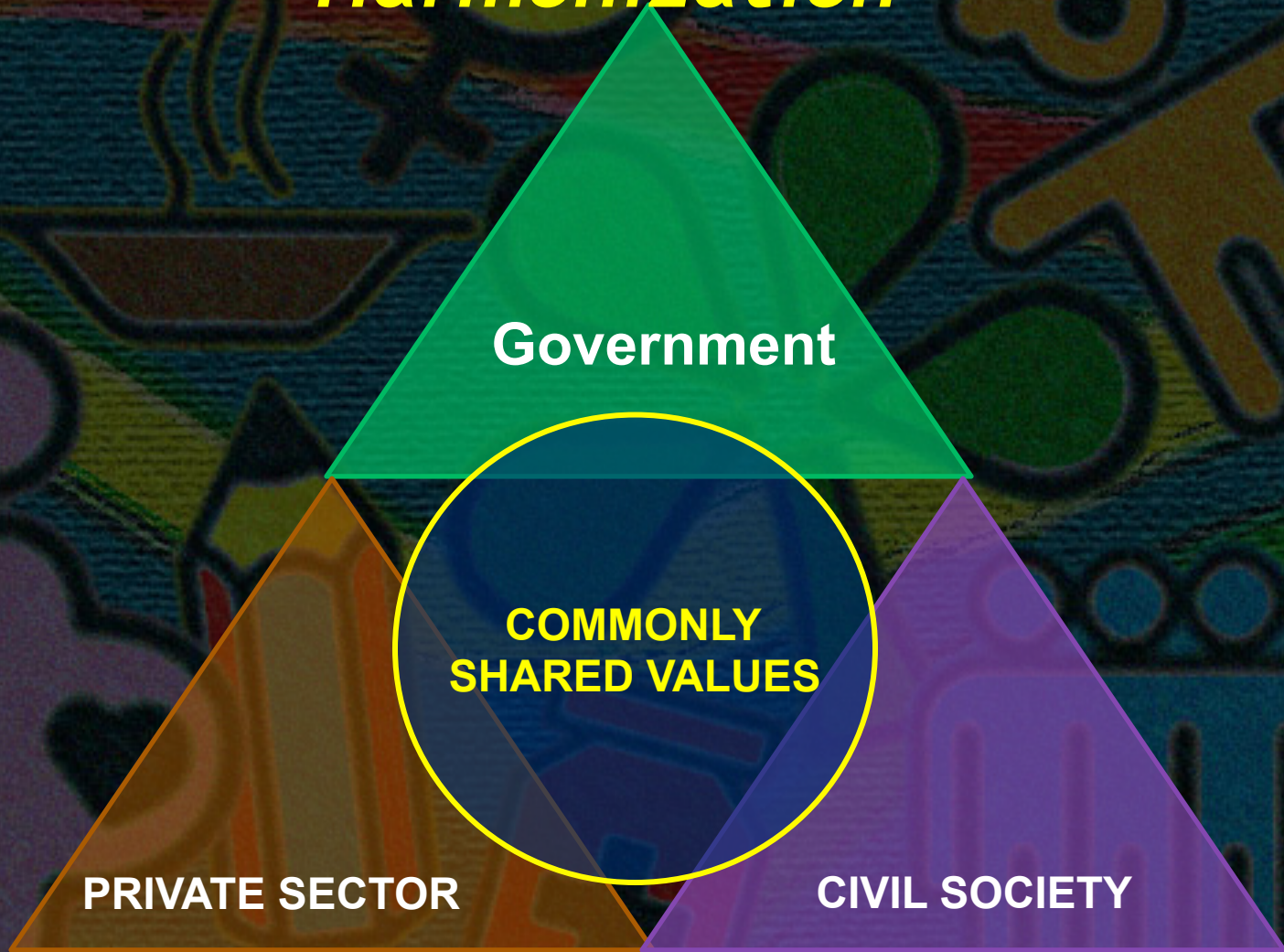


# Role of Office of President's Special Envoy on MDGs – Socialization & Advocacy

- Shifting from *business-as-usual* approach to synergistic, **out-of-the-box** strategy to accelerate the achievement of the MDG targets.
- Work hand in hand with all relevant stakeholders through creative approach; for example, through art and culture as well as social media.
- Coming up with *best practices* dan **evidence-based interventions** through various MDG-oriented programs

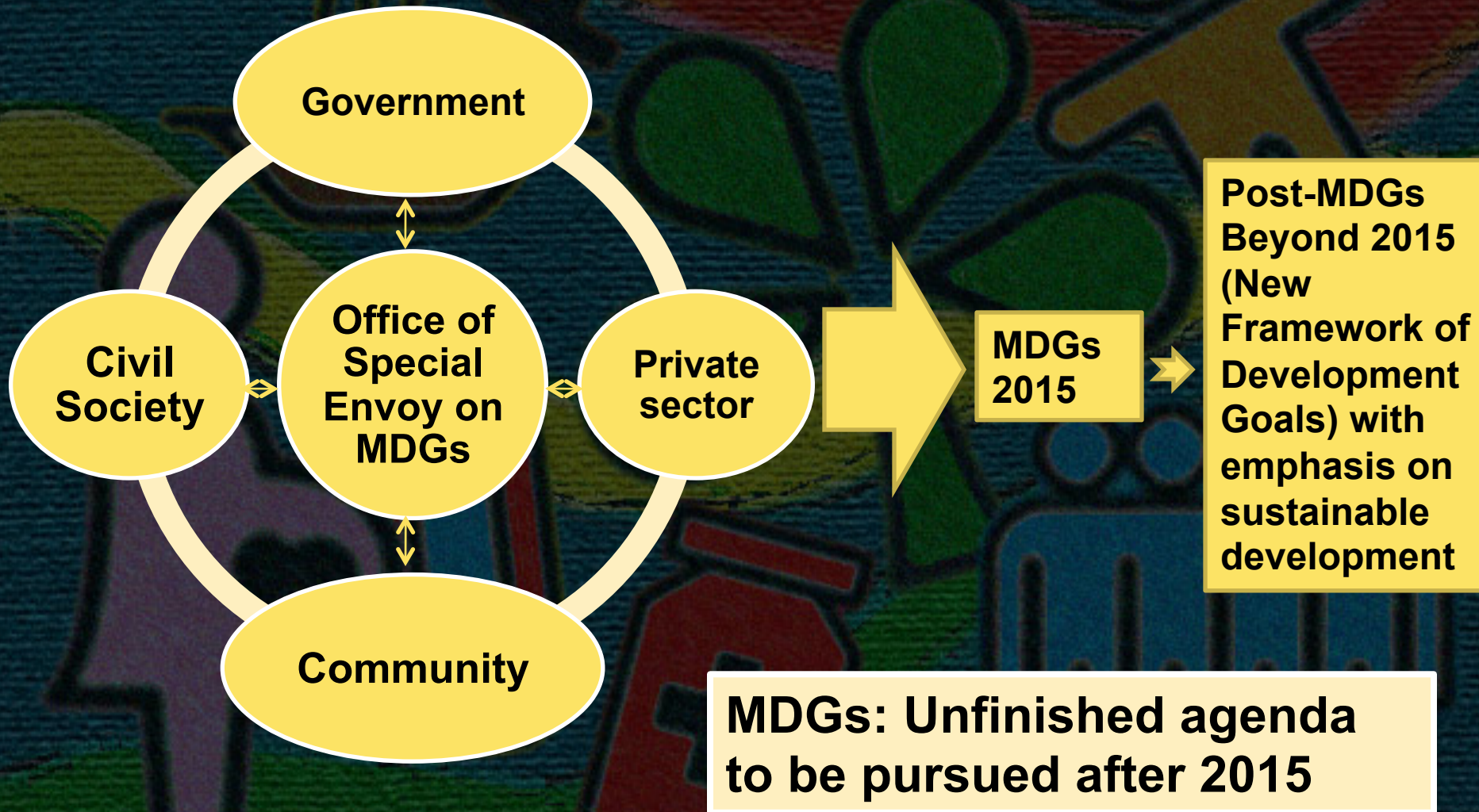


# *Platform Partnership and Harmonization*





# Collective Action toward MDGs by 2015 and Beyond







# KANTOR UTUSAN KHUSUS PRESIDEN RI UNTUK MILLENNIUM DEVELOPMENT GOALS



[www.pencerahnusantara.org](http://www.pencerahnusantara.org)  
Twitter: @pencerahnusa  
Facebook: Pencerah Nusantara



[www.indonesiamdgawards.com](http://www.indonesiamdgawards.com)  
Twitter: @MDGAwards  
Facebook: MDG Awards

***NOKIA LIFE***





Diah S. Saminarsih

diah.saminarsih[[@](mailto:diah.saminarsih@gmail.com)]gmail.com

| Assistant President's Special Envoy on MDGs | Office of President's  
Special Envoy on MDGs | Republic of Indonesia | Jl. Teuku Umar No.  
10 | Jakarta 10310 | Indonesia | phone: +6221 31901268 | fax: +6221  
31900502 | mobile: +62813 81196866 | [www.mdgsindonesia.org](http://www.mdgsindonesia.org) |  
[www.pencerahnusantara.org](http://www.pencerahnusantara.org) | [www.indonesiamdgawards.com](http://www.indonesiamdgawards.com)