

Findings of study abroad in NUS

February 4, 2015

Presenter: **Saito Wataru**

Supervisor: **Hanaoka Shinya**



TOKYO INSTITUTE OF TECHNOLOGY

The Graduate School of Science and Engineering

Department of International Development Engineering

Outline

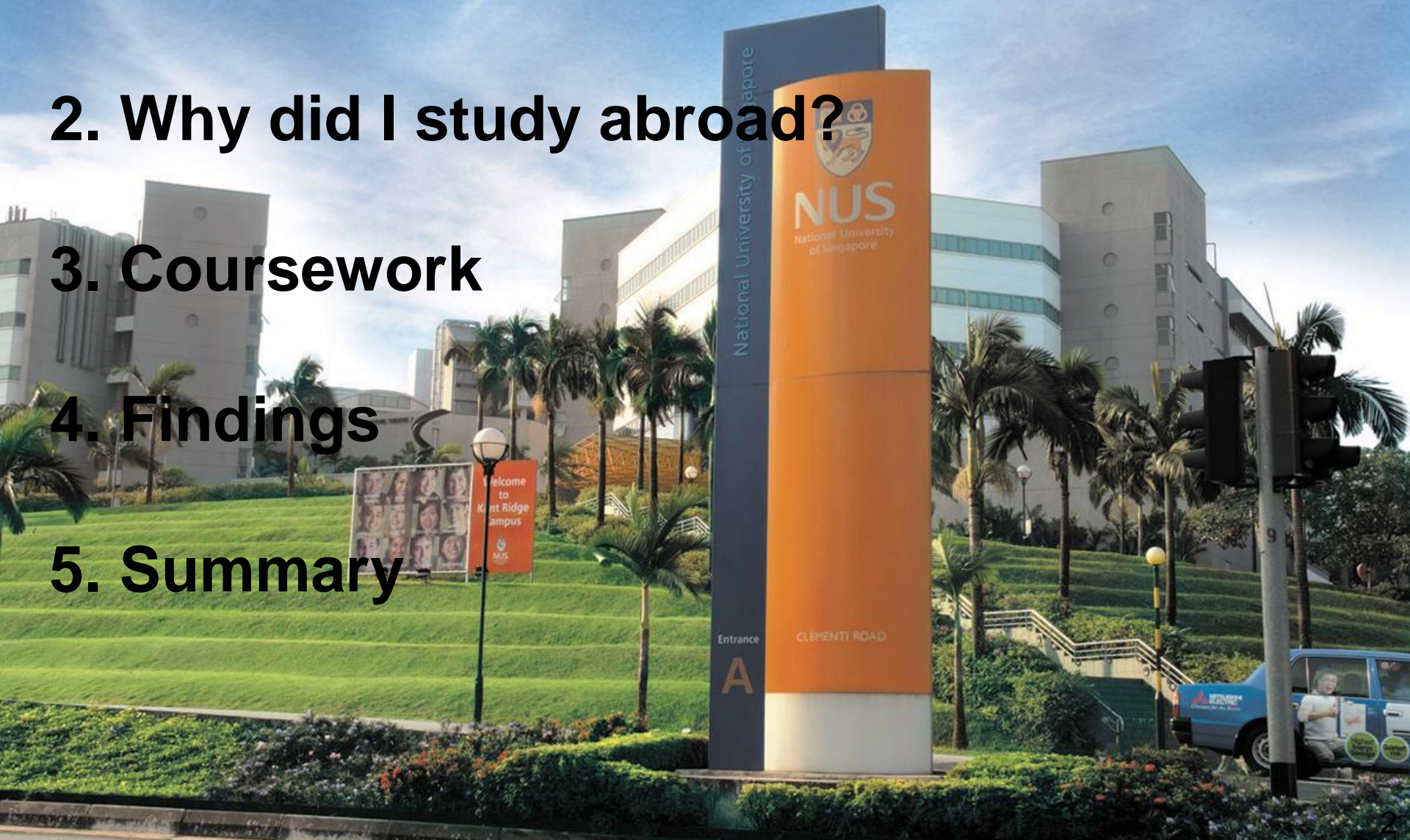
1. Introduction

2. Why did I study abroad?

3. Coursework

4. Findings

5. Summary



■ Singapore- 'Variety'

Size : 1/3 of Tokyo prefecture

Population: 5 million (1/3 of Tokyo prefecture)

■ National University of Singapore

- Many exchange student (1/3 of total)
- High university ranking (Top 30)
- Plenty partnership with other university

■ Coursework(class&tutorial)

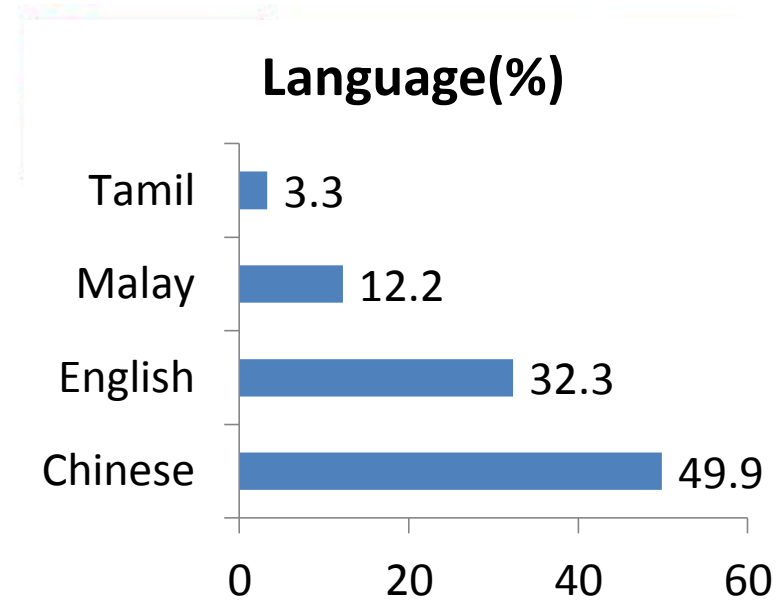
1 GLOBAL INFRASTRUCTURE PROJECT MANAGEMENT

2 MANUFACTURING LOGISTICS

3 CHANGING ECONOMIC LANDSCAPE OF SE ASIA

■ Period(4 month)

August 2, 2014~ December 7, 2014



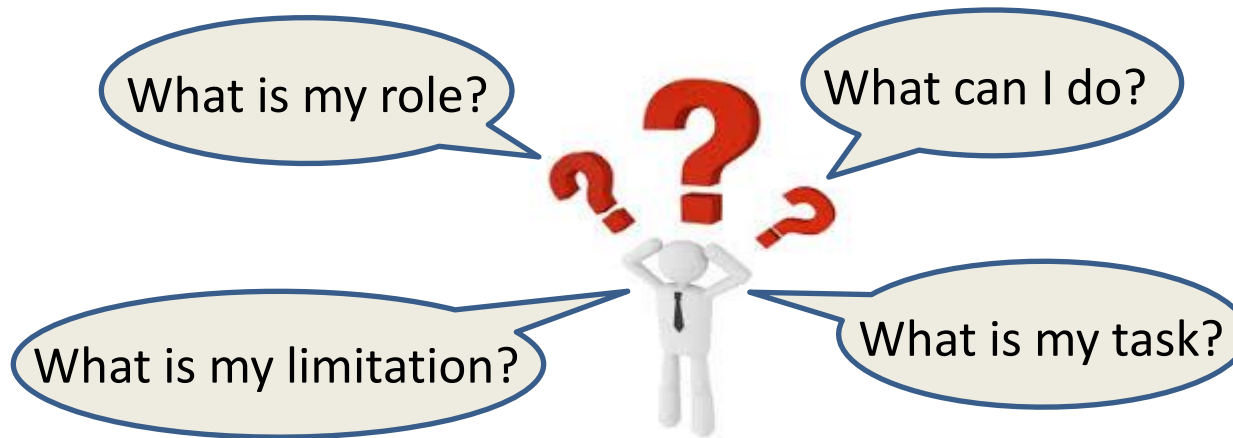
Why did I study abroad?

Future perspective
Wish to work abroad



Lack of experience

Objective
To know important factors to facilitate the group work
with foreign people in English



GLOBAL INFRASTRUCTURE PROJECT MANAGEMENT

Group work

- To develop LRT in Mumbai
- 4 Indians more than 25 years old

■ Part 1 Project Feasibility

Need Analysis

Engineering and design alternatives

Impact analysis

Financial analysis

Evaluation(AHP)

■ Part 2 Pre-bid planning

Risk registration

Legal, technical impact

Cross-cultural

Organization structure



富山ライトレール

Coursework [Output]

Part2: Risk registration

Risk Detail [Build stage]

Crane and transportation vehicle can not able to reach at exact location due to Mumbai congestion



Mitigation[Likelihood*Consequence]

- ✓ Divert traffic
- ✓ Construction in early morning
- ✓ Transportation in night

Unacceptable



Acceptable



Residual risk

- ✓ Reduced to acceptable level but not eliminated
- ✓ Transportation cost in night is higher



Important factors to facilitate group work with foreign people

■ 'To have enough English skill'

- Minimum requirement to take an initiative- Importance of Listening
- Not the only tool to make your own value

■ 'To say what you think at least on your part'

- What I was only able to do in class
- Importance of timing
- If you can do more, you should

■ 'To consider on what the others think of'

- To maintain situation of the group
- Important factor to be the leader

■ 'To understand the foreign culture'

- Important perspective to work abroad
- Key way to make your own value

Team leader: Saurabh



Objective

To know important factors to facilitate the group work with foreign people in English

Result (Important factors)

- To have enough English skill
- To say what you think at least on your part
- To consider on what the others think of
- To understand the foreign culture

Future work

Pay an effort to get

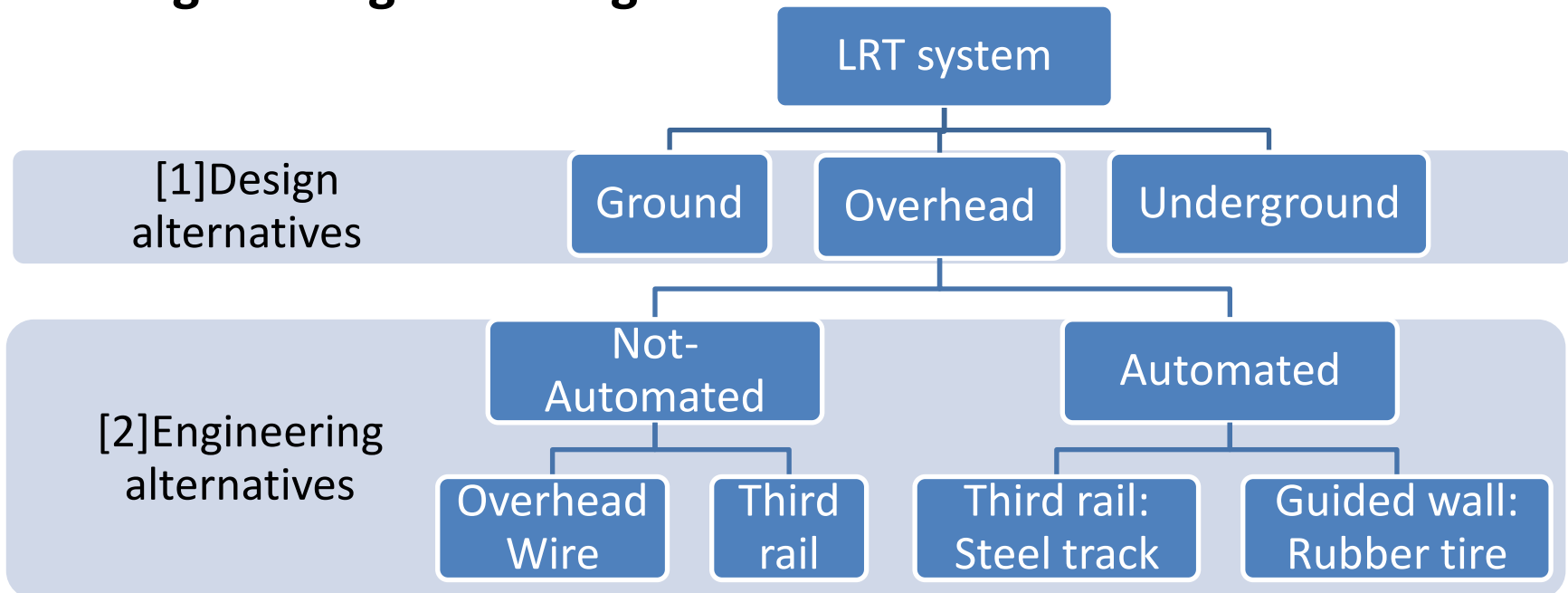
- English skill
- Being active to say what you think
- Consideration on other's thought
- Wide perspective to accept the other's culture

+ *EXPERIENCE*

Thank you for your kind attention.



Part1: Engineering and design alternatives



[1] Design alternatives

KL: Overhead line



- Merit : **Keep the space of ground**
Not too expensive as underground
Symbol of the city
- Demerit: Landscape
Connectivity with ground
Emergency case

Things I already had

- Confirming relationship of lab (Not normal, Non replaceable environment)
- Basic English

Things I newly have gotten

- New relationship (Singaporean, Japanese, the others)
- ASEAN 10 countries
- Variety of English

Things I am going to get

- More knowledge on Japan (War, Religion etc...)
- More knowledge on world
- English skill, group work skill



Can

Can ah?	<i>Can you or can't you?</i>	Can hor	<i>You are sure then...</i>
Can lah	<i>Yes.</i>	Can meh?	<i>Are you certain?</i>
Can leh	<i>Yes. I think so.</i>	Can bo?	<i>Can or not?</i>
Can lor	<i>Yes. Of course.</i>	Can can	<i>Confirm</i>
Can hah?	<i>Are you sure?</i>	Can liao	<i>Already can / Done</i>